



INSPIRING NEXT GEN DRCBIO.IN

CALL/WHATSAP:9038523765

DRC BIO CLASS 9 ICSE MMT ON CELL

f.m.=30 time =30 min

Q1. Centrioles are associated with 1

- a. DNA synthesis
- b. Reproduction
- c. Cell Division
- d. Respiration

Q2. Cell wall of plant is chiefly composed of 1

- a. Hemicellulose
- b. Cellulose
- c. Phospholipids
- d. Proteins

Q3. Chromatin consists of 1

- a. RNA
- b. DNA
- c. RNA and histone protein
- d. DNA and histone protein

Q4. State whether the following statements are true (T) or false (F): 3

- a. The protoplasm is the part of the cell which surrounds the nucleus.
- b. Genes are located in chromosomes.
- c. Anthocyanins are the pigments of flowers, which are dissolved in cell sap.

Q5. What are the main functions of each of the following cell components? 4

- a. Plasma membrane
- b. Chromosomes
- c. Lysosomes
- d. Ribosomes

Q6. Which organelle is known as the powerhouse of the cell? Why? 1+1

Q7. Why plasma membrane is called a selectively permeable membrane? 1+1

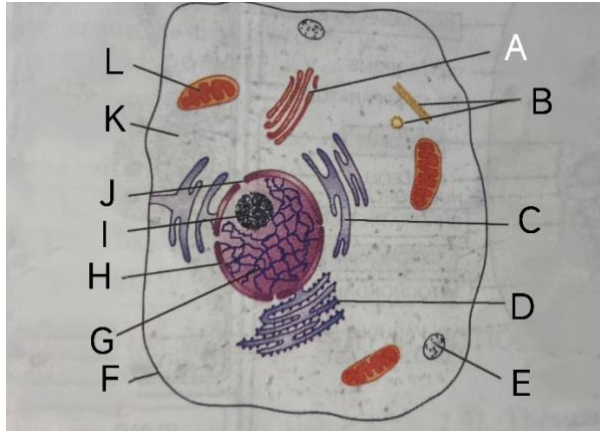


CONCEPT BASED BIOLOGY FOR NEET,CUET,IISER-IISC,BOARDS & FOUNDATION

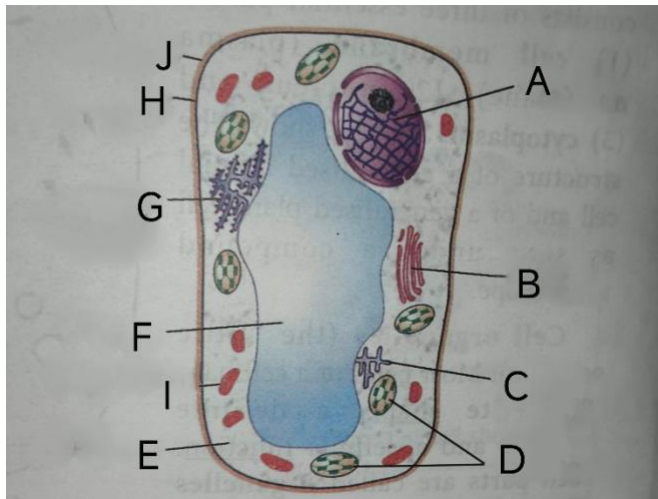
Q8. Name two semi-autonomous organelles. Give reasons why they are semi-autonomous. 2

Q9. What are the different types of endoplasmic reticulum? Write the functions of each. 1+1

Q10. Give the difference between leucoplasts and chromoplasts. 2



Q 11. Identify the components . 5



Q 12. Identify the components . 5